

1

2

3

4

5

6

SHEET NOTES

- SEE SHEET A-001 FOR GENERAL NOTES AND SYMBOLS
- SEE SHEET A-002 FOR TYPICAL MOUNTING HEIGHTS, AND LOCATIONS
- SEE SHEET A-003 FOR TYPICAL MOUNTING HEIGHTS, AND DETAILS
- SEE SHEET I-131 FOR ROOM FINISH SCHEDULE
- ALL WALLS TO BE PAINTED P-1 UNLESS OTHERWISE NOTED.
- INSTALL CARPET INSETS AT ALL ELECTRICAL FLOOR BOX LOCATIONS, CARPET TO MATCH ADJACENT FLOORING MATERIAL.
- ALL FINISH SELECTIONS IDENTIFIED IN LEGENDS, SCHEDULES, AND SPECIFICATIONS ARE NOT SUBJECT TO 'OR EQUAL' SUBSTITUTIONS UNLESS NOTED OTHERWISE. THE CONTRACTOR AND SUBCONTRACTORS SHALL SUBMIT PRODUCTS AND FINISHES AS INDICATED IN THE DOCUMENTS.
- NOTIFY ARCHITECT OF SCHEDULED FINISHES THAT ARE UNAVAILABLE OR DISCONTINUED AT THE EARLIEST OPPORTUNITY SUCH THAT A SUBSTITUTION CAN BE SELECTED WITHOUT JEOPARDIZING THE CONSTRUCTION SCHEDULE.
- INSTALL ALL FINISH MATERIALS IN ACCORDANCE WITH THE MANUFACTURER'S RECOMMENDED SPECIFICATIONS, SURFACE PREPARATION, ADHESIVES AND BACKINGS; INCLUDING WALLCOVERINGS, COATINGS, FLOORING MATERIALS, LAMINATES, ETC.
- FLOOR MATERIAL TRANSITIONS AT DOOR OPENINGS ARE TO BE CENTERED BELOW THE DOOR IN THE CLOSED POSITION, UNLESS NOTED OTHERWISE. SEE ALSO TRANSITION DETAILS ON SHEET I-131.
- PROVIDE TRANSITION STRIPS AT ALL FLOORING MATERIAL CHANGES, UNLESS NOTED OTHERWISE PER DETAIL(S) ON SHEET I-131. RESILIENT TRANSITION STRIPS TO MATCH BASE COLOR UNLESS NOTED OTHERWISE. WHEN PROVIDED, REFER TO PLAN FOR ADDITIONAL DETAIL LOCATIONS.
- WHERE FLOOR FINISH THICKNESS REQUIRES, FLOAT FLOOR SLAB AT FINISH TRANSITION AREAS A MINIMUM OF 2'-0" OR TO ACHIEVE A UNIFORM AND FLUSH TRANSITION BETWEEN FINAL FINISHED SURFACES.
- ACCESS PANELS, VISIBLE COVES OR ENCASMENTS, VISIBLE ELECTRICAL PANELS, ETC. TO BE PAINTED TO MATCH ADJACENT SURFACES.
- ALL INTERIOR WALLS, TRIM AND CEILING FINISHES OF PUBLIC AREAS TO COMPLY WITH CLASS A MATERIAL CLASSIFICATION; FLAME SPREAD RATING 0 TO 25. SMOKE DEVELOPED 200. ALL INTERIOR WALL AND CEILING FINISHES AND TRIM IN NON PUBLIC AREAS TO COMPLY WITH CLASS B MATERIAL CLASSIFICATION; FLAME SPREAD RATING 26 TO 75, SMOKE DEVELOPED 450, PER IBC CHAPTER 8.
- GENERAL CONTRACTOR IS RESPONSIBLE FOR MEETING ALL ACCESSIBILITY REQUIREMENTS FOR ALL FLOORING AND WALL SYSTEMS.
- PROVIDE MOISTURE TESTING OF CONCRETE PER FLOOR MFR PRIOR TO INSTALLATION OF FLOORING SYSTEMS.
- PROVIDE 2 1/2" X 2 1/2" X 48" HIGH STAINLESS-STEEL CORNER GUARDS AT ALL EXPOSED GYPSUM BOARD CORNERS. ALL CORNER GUARDS TO BE SET DIRECTLY ABOVE THE FLOOR BASE.



3500 Parkway Lane
Suite 500
Peachtree Corners
Georgia 30092

Copyright © 2024 by Pond & Company. All rights reserved. No copying or duplication of these documents is allowed without the expressed written agreement of Pond & Company.

FL LICENSE NUMBERS:
ARCHITECTURE: AA20001253
ENGINEERING: 9085

EOR/AR SEAL

CLIENT INFORMATION

SEEFRIED INDUSTRIAL PROPERTIES, INC.
333 RIVERWOOD PARKWAY, SUITE 200 ATLANTA, GA 30339

PROJECT NAME

LEM TURNER WAREHOUSE - SHELL BUILDING 200

12435 LEM TURNER ROAD
JACKSONVILLE, FL 32218

DRAWING ISSUE

MARK	DESCRIPTION	DATE
4	ADDING OFFICE SPECS & JANITOR RM	06/27/2024

DESIGNED BY: KW
DRAWN BY: KW
CHECKED BY: RLE
SUBMITTED BY: CD
DATE: 09/14/2023
PROJECT #: 1230339

SHEET TITLE

INTERIOR FINISH PLAN

SHEET NUMBER

I-101

ORIGINAL SHEET SIZE: 30" X 42"

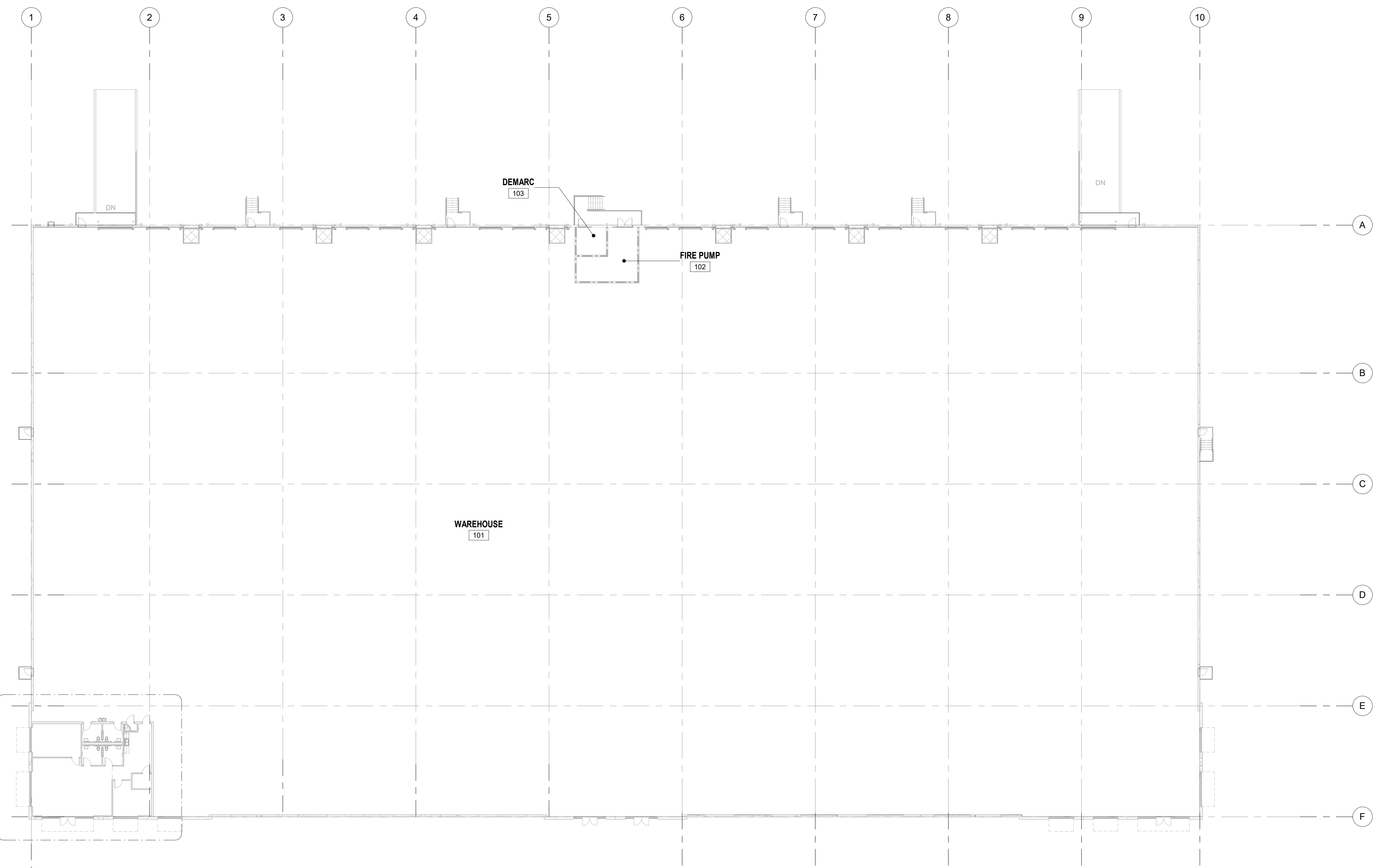
FINISHED LEGEND

- CPT-1
- LVT-1
- PFT-1
- SC-1
- ST-1

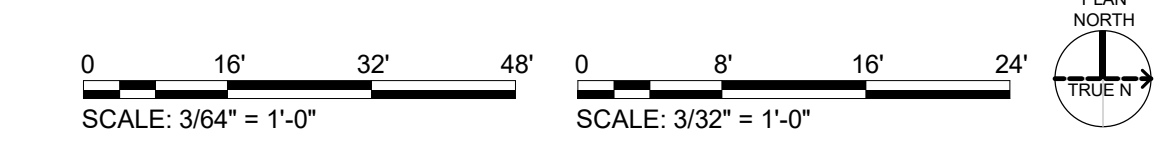
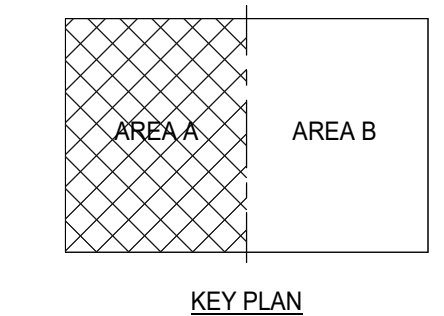
LEGEND

xxx ACCENT FINISH LOCATION

D1 FINISH PLAN - OFFICE
SCALE: 3/32" = 1'-0"



A1 INTERIOR FINISH PLAN
SCALE: 3/64" = 1'-0"



6/27/2024 5:52:48 PM Autodesk Docs://1230339 - Lem Turner (Seefried)/1230339_Lem Turner_Bldg 200_ARCH_V02.rvt